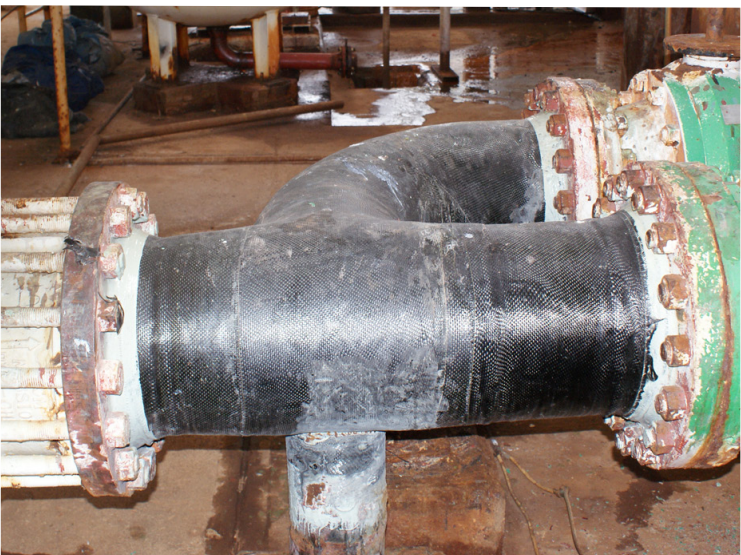


***AVOID
DOWNTIME...***



HydraWrapTM IT!

Corrosion Barrier for degraded piping
Thin wall and Through wall

Repair and upgrade various shapes

Avoid unplanned shutdowns

No Hot Work required

Installed with common tools
in less than 30 minutes

Engineered to ASME Standards

ABS Design Approved

HYDRAWRAP™ INSTALLATION PROCEDURE

Prep Surface Identify and mark area for repair. Prep surface to give clean dry white metal with rough profile. All sharp edges are to be removed and any voids filled with putty.

Measure Fabric around area to be repaired providing at least two layers of fabric. Cut fabric to desired length.

Combine and Mix Primer Segregate Primer containers from Wet-Out containers. Pour contents of one container of A side Primer into one container of B side Primer. Scrape out A side container ensuring any residual contents are combined with B side. Mix with jiffy mixer until color is uniform throughout. 1-2 minutes.

Apply Primer using supplied spreader to the prepped surface ensuring complete coverage and no drips or runs.

Combine and Mix Wet-Out using same procedure as was used for Primer. Thoroughly mix with Jiffy mixer for 2 minutes.

Apply Wet-Out to Fabric Lay out dry fabric on clean non porous surface (table covered in plastic) and saturate with Wet-Out using supplied spreader. Ensure fabric is completely saturated then squeegee out excess resin. Role fabric on cardboard tube or roller.

Install Saturated Fabric Center fabric over repair. Wrap around with consistent uniform pressure. Ensure fabric is snug around pipe. Two wraps will give the minimal 2 required layers of fabric. More layers will provide additional structural support. Leave 1" exposed primer on either side of fabric. Any entrapped air is worked out of fabric by applying pressure via spreader.

Cure A top coat can be applied to the repair after 3 hours. HydraWrap will develop full physical properties within 24 hours of application.



HYDRAWRAP™ CARBON FIBER REPAIR KIT ORDERING INFORMATION

Part No. for standard kits consist of: **System Code - Pipe Size - Pipe Style**
example: **MSH-12-W** (Marine STD HydraWrap for 12" Weld Repair)

SYSTEM CODE	PIPE SIZE	PIPE STYLE
MSH - Standard HydraWrap	4 - up to one 4" pipe 12 - up to one 12" pipe	W - Weld
MHH - High Temp HydraWrap	6 - up to one 6" pipe 16 - up to one 16" pipe	E - Elbow
MAH - Acid Resistand HydraWrap	8 - up to one 8" pipe 18 - up to one 18" pipe	T - Tee
	10 - up to one 10" pipe 24 - up to one 24" pipe	SS - Strait Spiral



HydraTech Engineered Products
10448 Chester Road | Cincinnati, OH 45215
513.827.9169 | www.hydratechllc.com